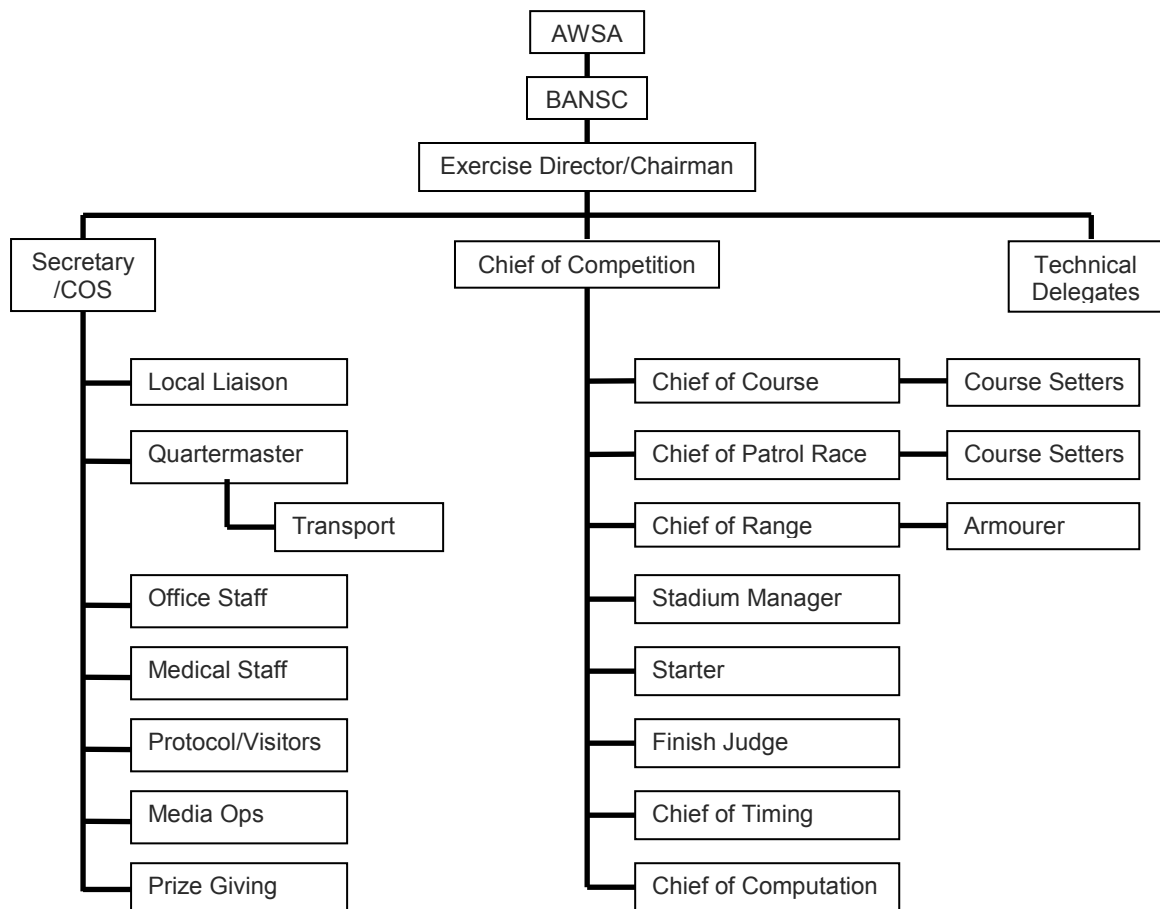


## RESPONSIBILITIES OF CHAMPIONSHIP & COMPETITION OFFICIALS

### GENERAL

- D.1 Detailed duties for all officials have been developed as AWSA Nordic SOPs for Ex RUCKSACK and are adaptable for all championships. This annex provides merely an introduction to each official's responsibilities in order to give a general overview of the range of tasks required to be undertaken and the experience expected. It also details the responsibilities of the Competition Jury.
- D.2 The organisation of officials is as follows:



### CHAMPIONSHIP OFFICIALS

- D.3 **Chairman of the Championships/Exercise Director.** Overall responsibility for each championship must be vested in a senior Army officer. He is responsible to the AWSA, and thus to the Army chain of command, for the conduct of the championships and effective value for money of the training conducted. At the Army Championships he will normally be the AWSA Nordic Chairman, unless unavailable in which case he will appoint a replacement to represent him. At divisional championships the Chairman has traditionally been called the Exercise Director and is appointed by the responsible formation commander; he is also responsible for the alpine competitions.

- D.4 **Secretary/Chief of Staff.** The Chief of Staff is responsible to the Chairman for all pre-championship preparation and the administration during the championship. His responsibilities, which may be delegated, include *inter alia*: running the Competition Office; the provision of transport and medical services; the coordination of support to senior visitors; organisation of media support; the provision of prizes and the coordination of prize-giving ceremonies.
- D.5 **Technical Delegate (TD).** The TD will be the most experienced official, who is responsible for advising the Chief of Competition on all safety and technical aspects. He is Chairman of the Competition Jury and determines all necessary interpretation of the rules. He should be appointed by the AWSA to ensure the maintenance of competition standards and to identify officials with potential for development and advancement. When the Army Championships host national competitions, the BBU and SSGB appoint the TDs.
- D.6 **Chief of Competition.** The Chief of Competition is responsible for the conduct of each competition, from competitor registration and entry, through course and range layout, competition conduct, including safety, to the approval and publication of results. He must be an experienced nordic official, ideally an experienced nordic racer, who will supervise and develop the other competition officials. Often this role will be carried out by the TD.
- D.7 **Chief of Course.** Supported by one or more Assistant Course Setters, the Chief of Course is responsible for all aspects of course design, planning, preparation, briefing and marking, inclusively from the start through to the finish, including the ski trail through the range and the range penalty loop. He is also to prepare a ski test area and warm-up tracks. He will be responsible for locating controls around the course in order to check that competitors ski the whole and correct course.
- D.8 **Chief of Range.** The Chief of Range is responsible for all firing practices and the preparation of the range for practice and competition. During the competition he is responsible for the correct presentation of targets to the competitors and the accurate recording of firing records. He will supervise the work of the Armourer. Ideally he will be qualified as a biathlon Range Conducting Officer (RCO); if not, a qualified RCO must be appointed to be responsible for the safe conduct of all practices. For the Military Patrol Race using SA80 a military RCO must be responsible for all safety on the range.
- D.9 **Stadium Manager.** The Stadium Manager is responsible for all activities in the stadium area, including the flow of competitors to the start and from the finish, the start and finish inspections, ski marking and post-race recuperation of competitors. He is responsible for the layout of fencing, course markings and signs in the stadium area.
- D.10 **Starter.** The Starter is responsible for all aspects of starting the competitors, from laying out the start and hand-over area to ensuring that competitors start in the correct manner at the correct time with the correct dress and marked equipment; this includes overseeing the relay handover. He maintains tight liaison with the Stadium Manager and Chief of Timing.
- D.11 **Chief of Timing.** In conjunction with the Starter and Finish Judge, the Chief of Timing is responsible for the operation of the timing system to record each competitor's start and finish times to the nearest tenth of a second. The resulting running times are passed to the Chief of Computation for processing into the results.
- D.12 **Finish Judge.** The Finish Judge is responsible for all aspects of the competition finish, ensuring that it is laid out and marked correctly, that competitors are recorded as they finish and the integrity of the finish area is maintained. He maintains tight liaison with the Stadium manager and Chief of Timing.
- D.13 **Chief of Computation.** The Chief of Computation is responsible for maintaining a comprehensive list of competitors in the championship, from which he produces the start list for those entered in each competition; from the competitors' running times he produces the required results, from which the prize-winners can be identified.
- D.14 **Chief of Patrol Race.** Due to the unique nature of the Military Patrol Race a dedicated Chief of Race must be appointed in good time to enable sufficient advance planning in order to: devise a concept of ops; devise 'Activity' options and obtain any special stores required; familiarise himself with the available terrain and snow conditions; produce the course maps and scenario briefing; allocate officials to tasks and brief them; and mark the course. He will require assistance from every available official, particularly on the day but also in advance, as well as a significant number of assistant officials from the teams.

## COMPETITION JURY

- D.15 The role and composition of the Competition Jury are described in AWSA Rule 1.13.
- D.16 The Tasks of the Competition Jury (IBU Competition Rules Annex B; FIS art 303.2) are to:
- D.16.1 Prior to the Competition:
    - D.16.1.1 Supervise the Draw;
    - D.16.1.2 Decide if, and under which conditions, a late entry may be accepted;
    - D.16.1.3 Decide if a competitor properly entered for participation may be replaced by a substitute in the case of *force majeure*;
    - D.16.1.4 Decide on protests concerning eligibility of competitors.
  - D.16.2 During the Competition:
    - D.16.2.1 Ensure that the competition is conducted according to the AWSA Competition Rules;
    - D.16.2.2 Direct the necessary measures if difficulties occur that seriously endanger the correct and fair conduct of the competition: an extreme option may be to stop the competition;
    - D.16.2.3 Decide on the admission of competitors who arrive late at the start due to *force majeure*.
  - D.16.3 After the Competition:
    - D.16.3.1 Determine the outcome of protests;
    - D.16.3.2 Impose or reject penalties reported by competition officials;
    - D.16.3.3 Determine necessary time adjustments;
    - D.16.3.4 Verify the Unofficial Results;
    - D.16.3.5 Annul a competition, if necessary;
    - D.16.3.6 Order the repeat of a competition, if justified and possible.
  - D.16.4 Before, During and After the Competition:
    - D.16.4.1 Be prepared at all times to decide on all matters that are not covered in the AWSA Rules;
    - D.16.4.2 Meet at times convened by the TD: normally before the competition is due to start in order to confirm that everything is in place and so authorise it to start; and after the last competitor has finished in order to report on any potential difficulties or concerns with the conduct of the competition.

DELIBERATELY BLANK